

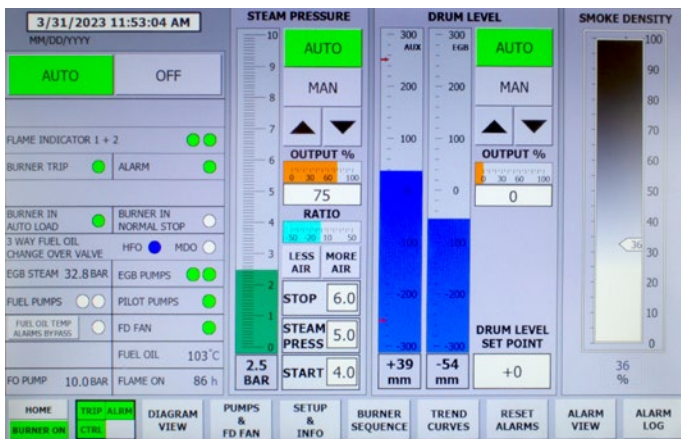
New Boiler Control System

To ensure safe and reliable operation of your vessel's boiler, a high-quality and easy-to-use control system is preferable.

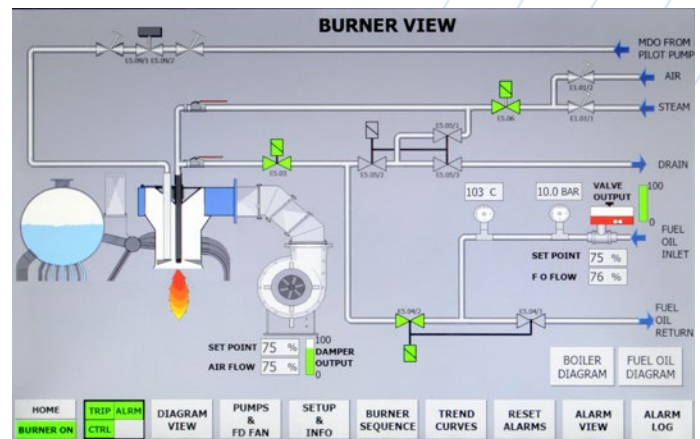
At Global Boiler Services, we can assist you in upgrading your existing control system with a new long-lasting solution, with a 10-year supply guarantee for any new installation.

We achieve this by using the highly versatile Siemens S7-1500 PLC as the base for the system. This makes it possible to fit in with any boiler setup, new or retrofit, and with any combination of burners.

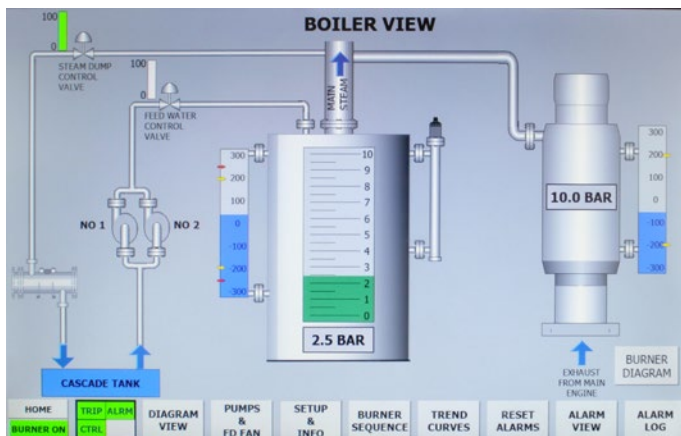
Furthermore, using the Siemens PLC secures worldwide availability of high-quality components.



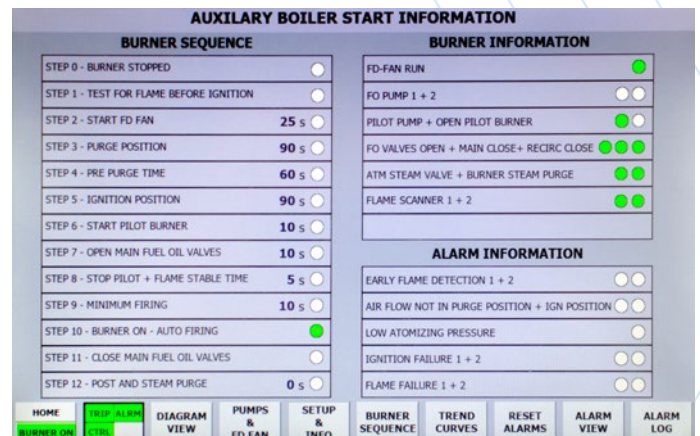
Boiler Control System interface - Overview



Boiler Control System interface - Burner Overview



Boiler Control System interface - Boiler Overview



Boiler Control System interface - Boiler Sequence

Example of new Control System for 1 AUX boiler

Scope of Material

One set new Global Boiler Services standard Siemens PLC based boiler control system to cover the operation of 1 x boiler/burner unit.

The control system upgrade, containing all necessary components required, will consist of the following hardware:

- 1 pcs pre-assembled and tested PLC set(s) handling the Burner Control Management program and Boiler Safety System.
- 1 pcs 12" HMI touch screen for local control
- 1 pcs 12" HMI touch screen for ECR control, enabling Boiler monitoring/control from ECR
- 1 set of installation materials (communication cables, power supplies, terminals etc.)
- Engineering and documentation package - to be submitted to Class Society.

Installation Onboard

The installation is estimated to be carried out in 4–5 uninterrupted working days by a team of 2 service engineers.

Scope of Work

Scope of work for Global boiler's service engineer(s):

- Programming of PLC unit & FAT with class (completed at Global Boiler Services workshop).
- Decommissioning and removal of old controllers/control system.
- Installation of new Control System.
- Installation and wiring of new related materials (if ordered).
- Installation of HMI in ECR
- Commissioning and testing of new system



Before installation on Boiler Control System



After installation on Boiler Control System